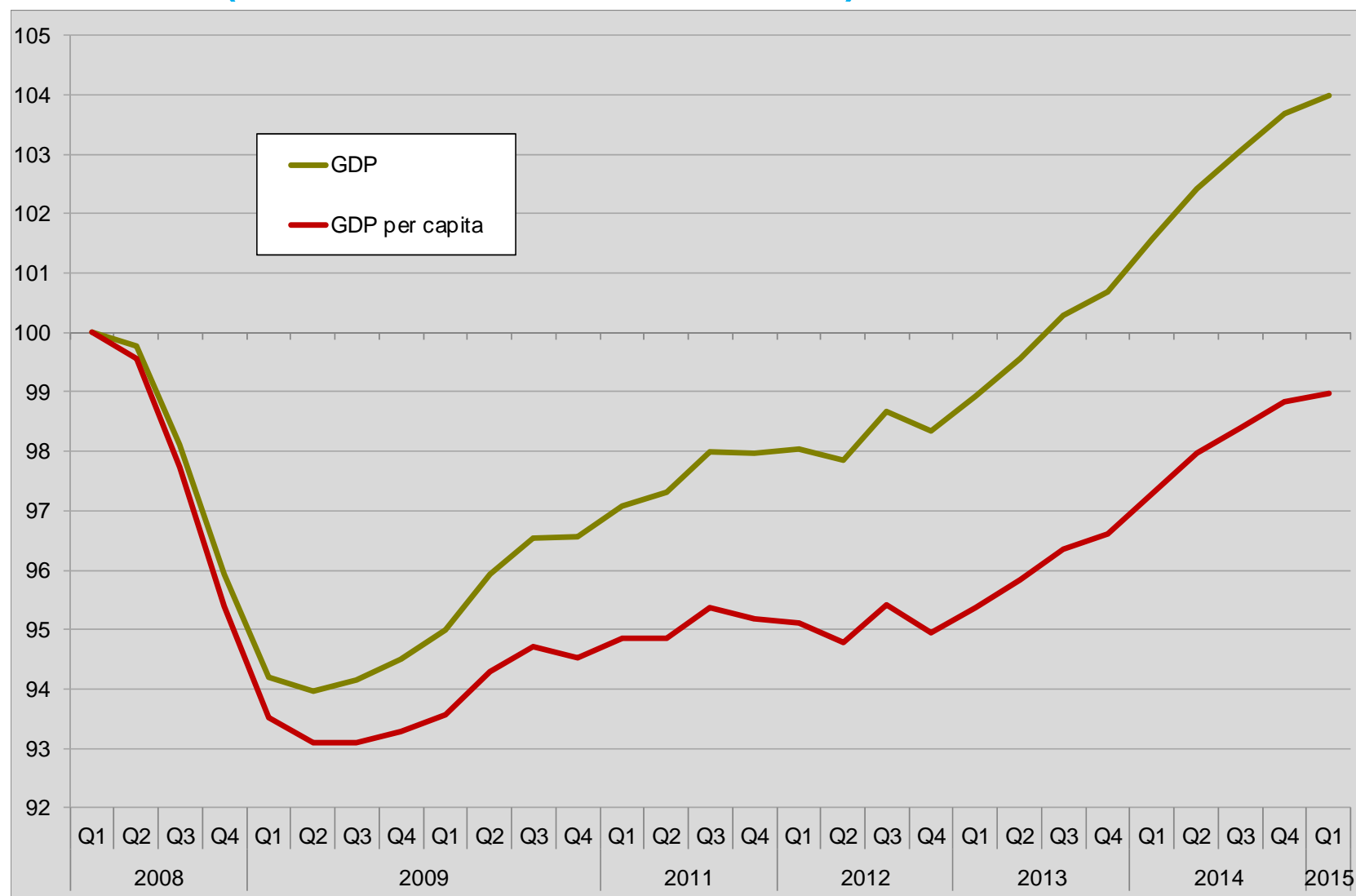


## Buckinghamshire Business First

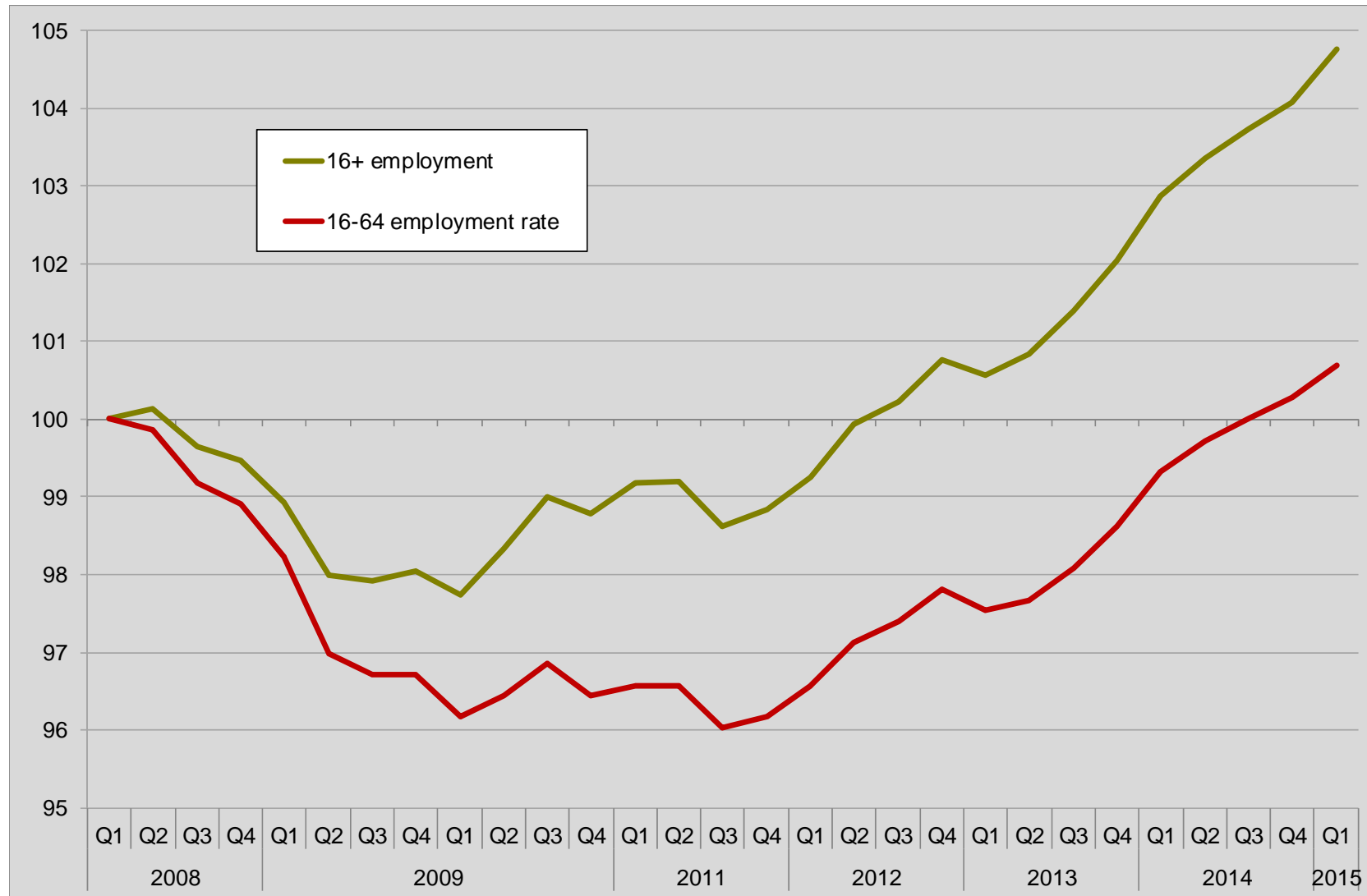
# Buckinghamshire and the rural economy

5 June 2015

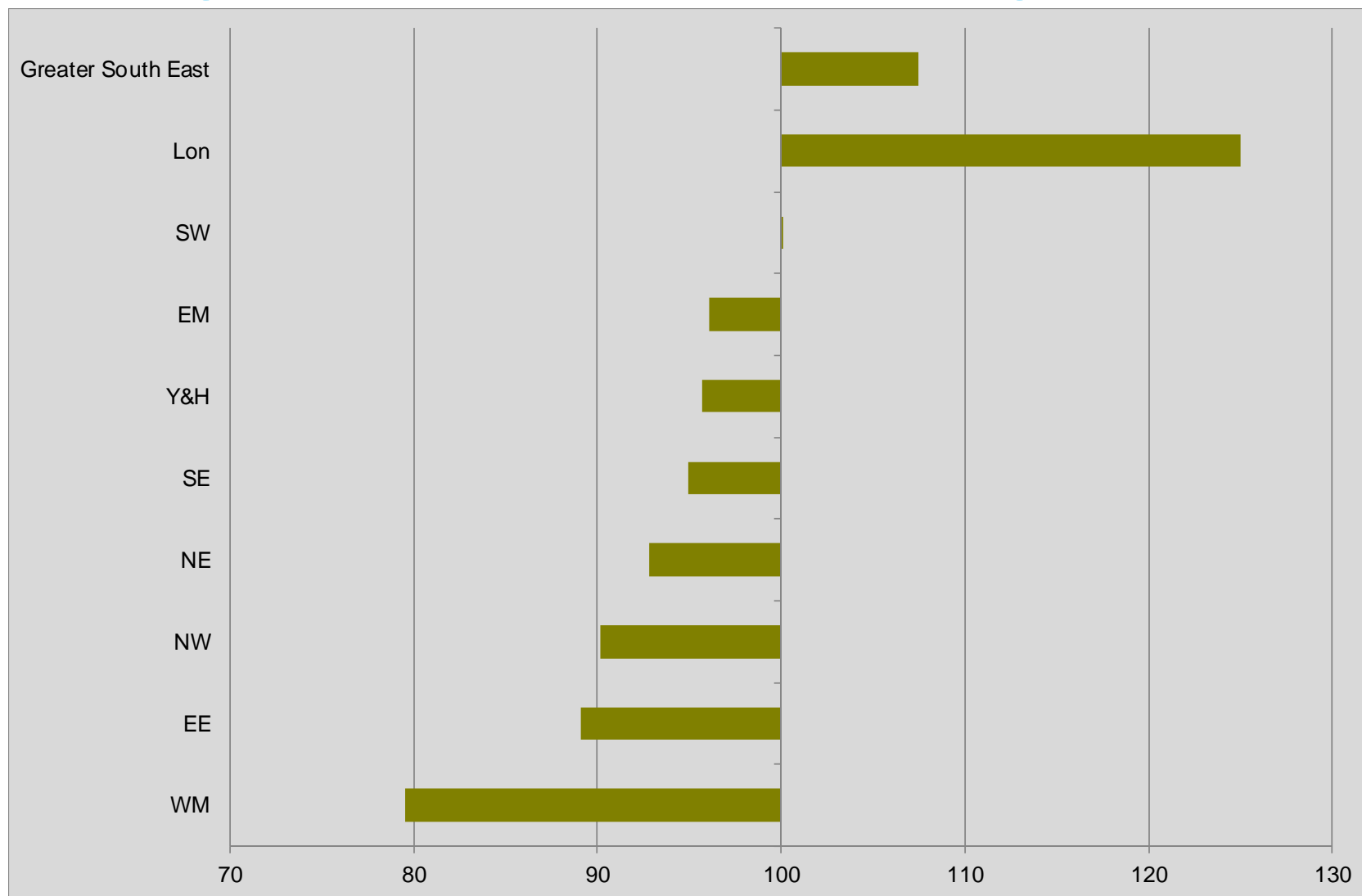
# GDP (Q1 2008 = 100)



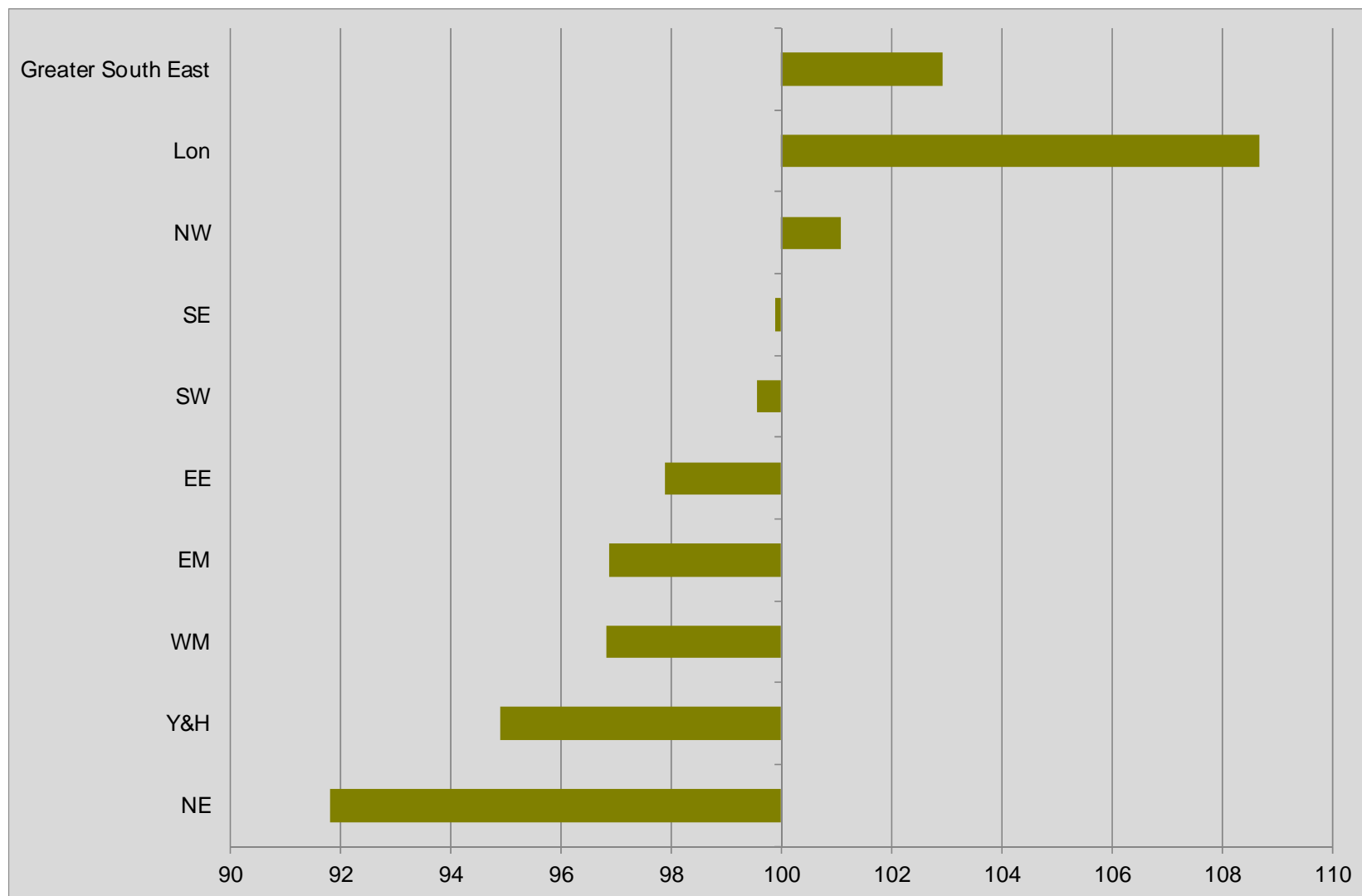
# Jobs growth (Q1 2008 = 100)



# GVA growth 2000-13 (Eng=100)

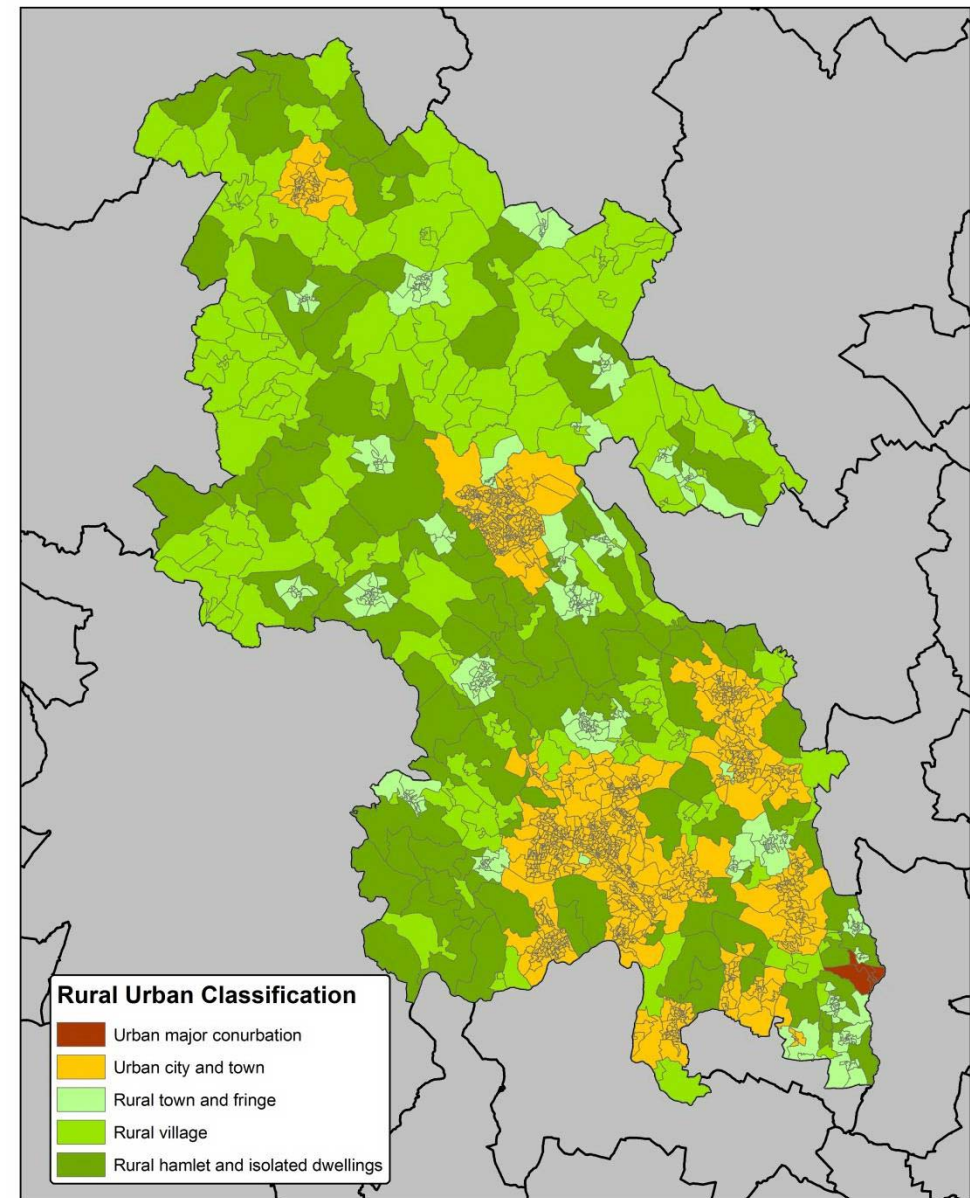


# Jobs growth 2008-14 (Eng=100)



## Employment by RUC at OA

Major conurbation:	1,810
City and town:	156,871
Rural town and fringe:	27,127
Rural village:	22,263
Rural hamlet & isolated:	16,866



Rural-Urban Classification by Output Area, 2011

This map is reproduced from Ordnance Survey material with the permission of Ordnance Survey on behalf of the controller of Her Majesty's Stationery Office. Crown Copyright. Unauthorised reproduction infringes Crown Copyright and may lead to prosecution or civil proceedings.  
© Copyright Buckinghamshire County Council Licence No. 100021029 2010  
Imagery © GeoPerspectives.com



Produced by BBF  
22 May 2015

Scale: 1:300,000 at A4



# Rural businesses in Buckinghamshire

More likely to be positive about

- Availability of skills
- Transport connectivity
- Access to finance

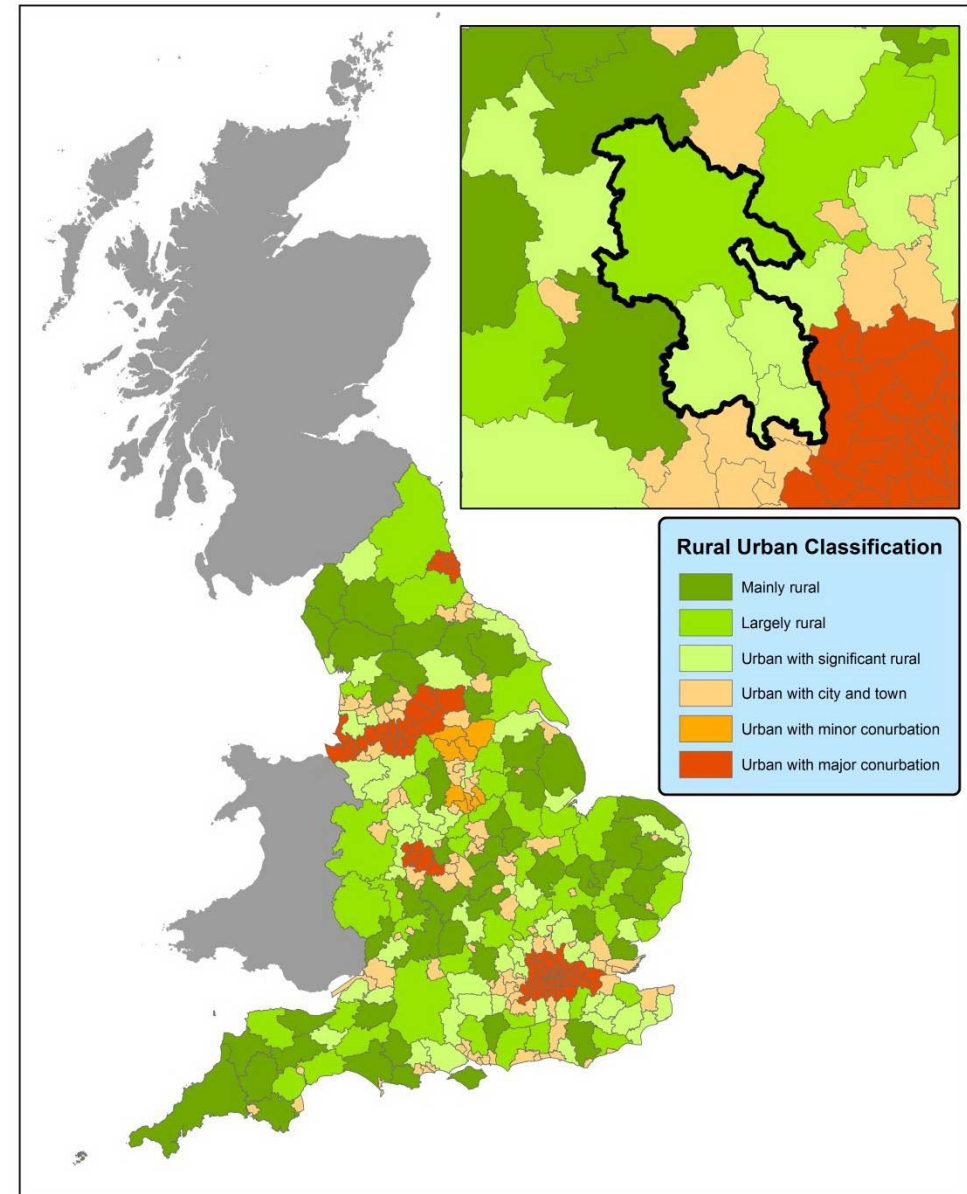
More likely

- To be satisfied with Buckinghamshire as a place to do business – including broadband
- To be engaged in professional, scientific & technical activities
- To have seen turnover increase in the last year
- Not to have sought finance
- To have created jobs

## Employment by RUC at LAD level

Urban maj conurbation: 9.4m  
Urban min conurbation: 0.9m  
Urban city & town: 6.7m  
Urban signif rural: 2.9m  
Largely rural: 2.4m  
Mainly rural: 1.8m

London: 4.7m  
Maj conurb – London 4.7m



Rural Urban Classification by Local Authority District

This map is reproduced from Ordnance Survey material with the permission of Ordnance Survey on behalf of the controller of Her Majesty's Stationery Office. Crown Copyright. Unauthorised reproduction infringes Crown Copyright and may lead to prosecution or civil proceedings.  
© Copyright Buckinghamshire County Council Licence No. 100021029 2010  
Imagery © GeoPerspectives.com



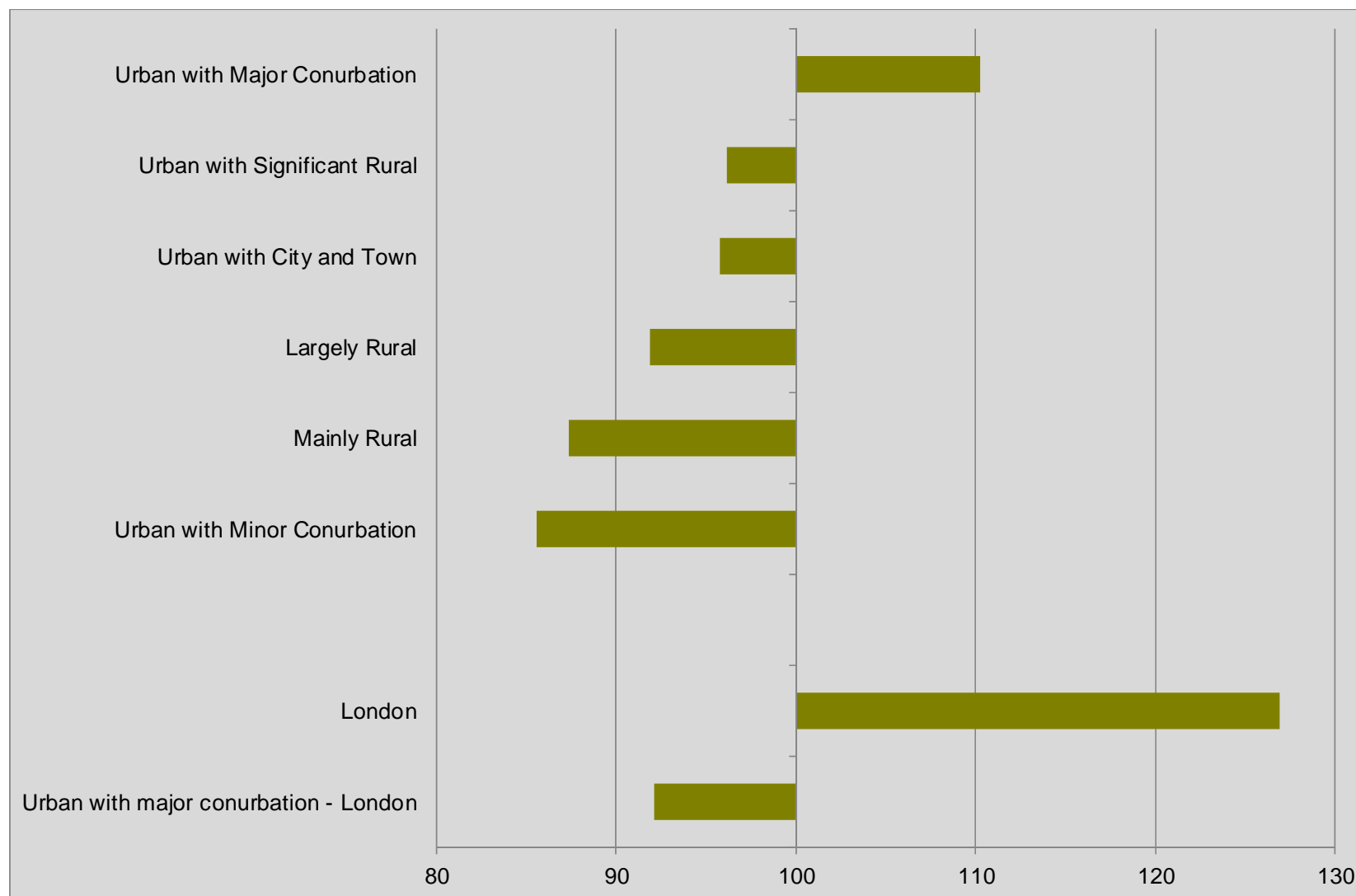
Produced by BBF  
26 May 2015

Scale: 1:4,500,000 at A4

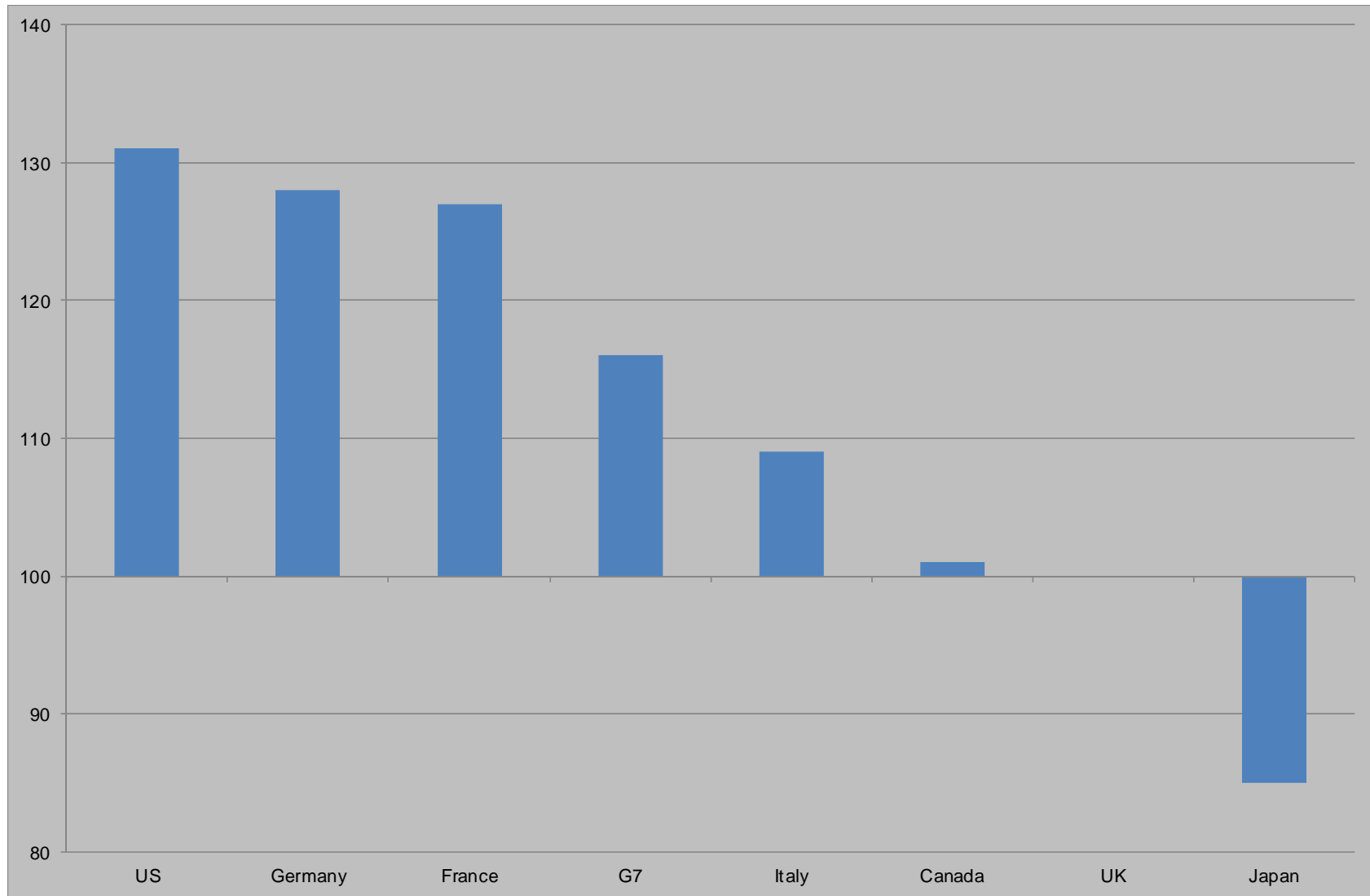




# Productivity (Eng=100)



# The UK in the G7



# Workplace occupation by RUC

	Urban with Major Conurbation	Urban with Minor Conurbation	Urban with City and Town	Urban with Significant Rural	Largely Rural	Mainly Rural	Urban with major conurbation - London	London	Urban - London	Rural
1. Managers, directors and senior officials	103.1	84.9	93.1	103.7	101.3	107.9	90.2	116.9	91.4	104.0
2. Professional	113.0	90.1	101.7	90.8	84.1	76.1	96.9	113.0	99.0	84.6
3. Associate professional and technical	112.9	85.3	94.9	93.1	89.9	89.6	91.9	112.9	93.1	91.1
4. Administrative and secretarial	106.5	97.2	102.8	95.2	89.6	84.1	107.4	106.5	104.1	90.3
5. Skilled trades	81.8	103.8	95.1	112.6	126.6	141.0	94.1	81.8	95.4	125.0
6. Caring, leisure and other service	90.9	104.5	102.3	106.9	110.0	107.6	102.9	90.9	102.7	108.1
7. Sales and customer service	97.5	119.2	110.4	98.3	89.8	84.9	113.4	97.5	112.2	91.8
8. Process, plant and machine operatives	88.3	121.9	99.6	105.4	116.0	114.5	110.7	88.3	105.5	111.4
9. Elementary	90.7	113.8	102.5	103.0	108.0	112.0	102.5	90.7	103.3	107.1

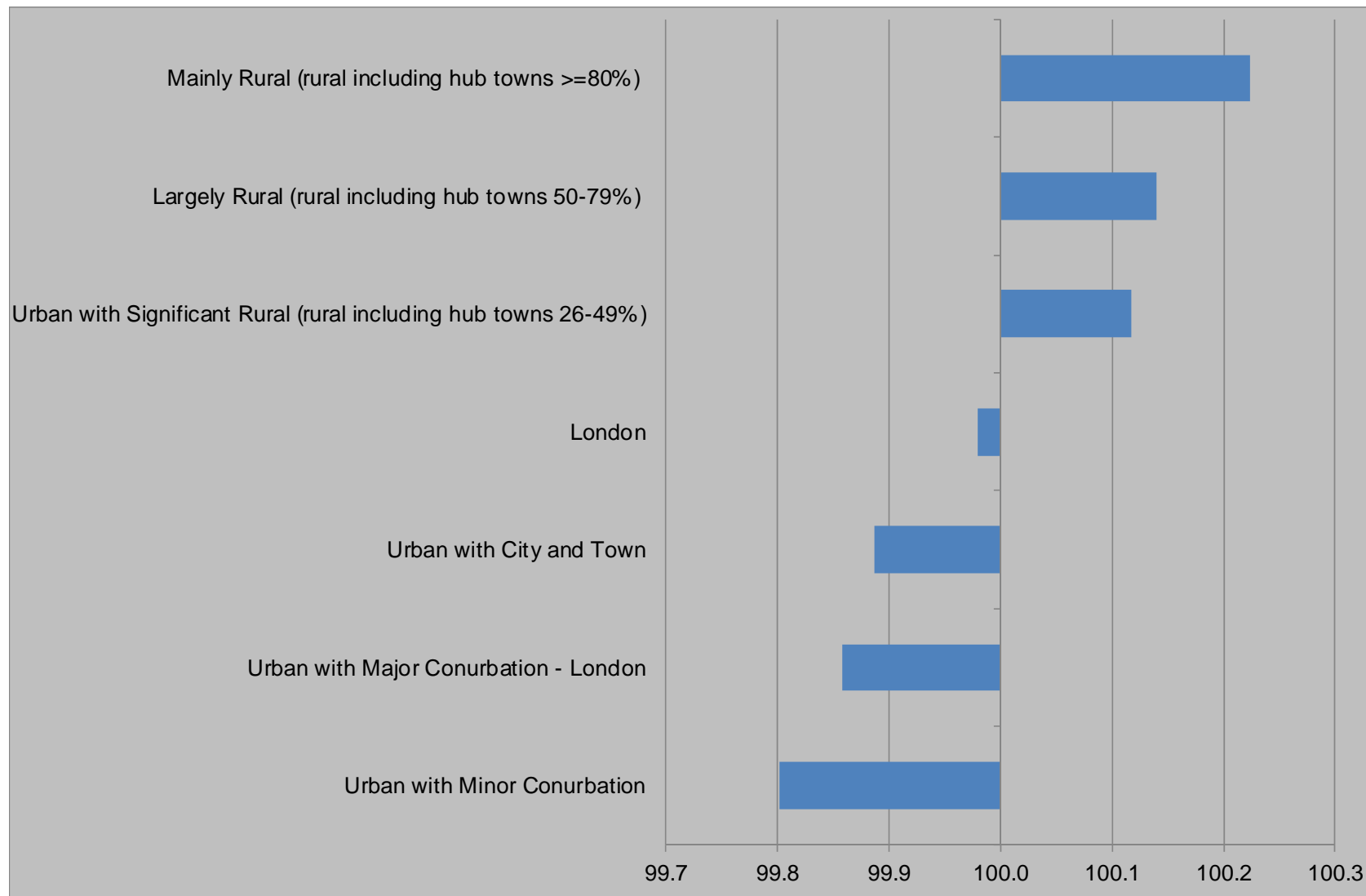
# Workplace industry by RUC

	Urban with Major Conurbation	Urban with Minor Conurbation	Urban with City and Town	Urban with Significant Rural	Largely Rural	Mainly Rural	Urban with major conurbation - London	London	Urban - London	Rural
A, B, D, E Agriculture, energy and water	54.9	85.5	85.0	125.6	172.9	220.3	72.6	36.0	80.3	167.0
C Manufacturing	73.2	125.5	107.3	115.3	127.5	124.9	108.0	35.9	108.9	122.1
F Construction	90.5	109.3	95.5	110.8	114.8	117.2	98.6	81.8	97.7	113.9
G, I Distribution, hotels and restaurants	93.0	103.4	102.8	106.2	102.0	108.4	102.3	83.0	102.7	105.3
H, J Transport and communication	114.5	84.2	100.6	91.3	82.8	76.1	93.7	136.9	96.8	84.4
K, L, M, N Fin., Real Estate, Prof & Admin	126.6	75.0	89.3	87.8	78.2	74.8	94.8	160.7	90.3	81.0
O, P, Q Public admin, education & health	97.4	110.5	106.2	96.2	99.3	93.1	105.0	89.4	106.1	96.4
R, S, T, U Other	106.9	89.0	89.6	98.4	99.6	110.8	91.8	123.1	90.4	102.1

“Job growth – the net job growth – I believe is going to come from the start up businesses, the small and medium sized enterprise businesses”

David Cameron  
CBI Conference, November 2014

# Where are the small firms?



# Closing remarks

- Geography matters
- “Cities” is too broad
- Compare beyond the UK
- Similarities may outnumber differences